

ACOND®

SPLIT TYPE AIR CONDITIONER
DC INVERTER AS - series

TECHNICAL SHEET

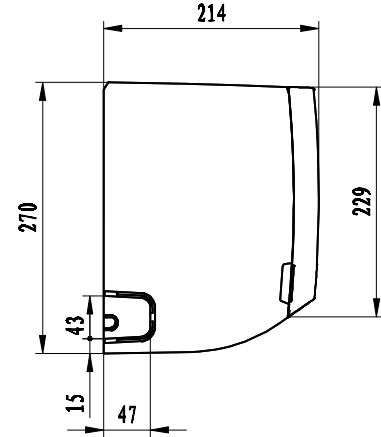
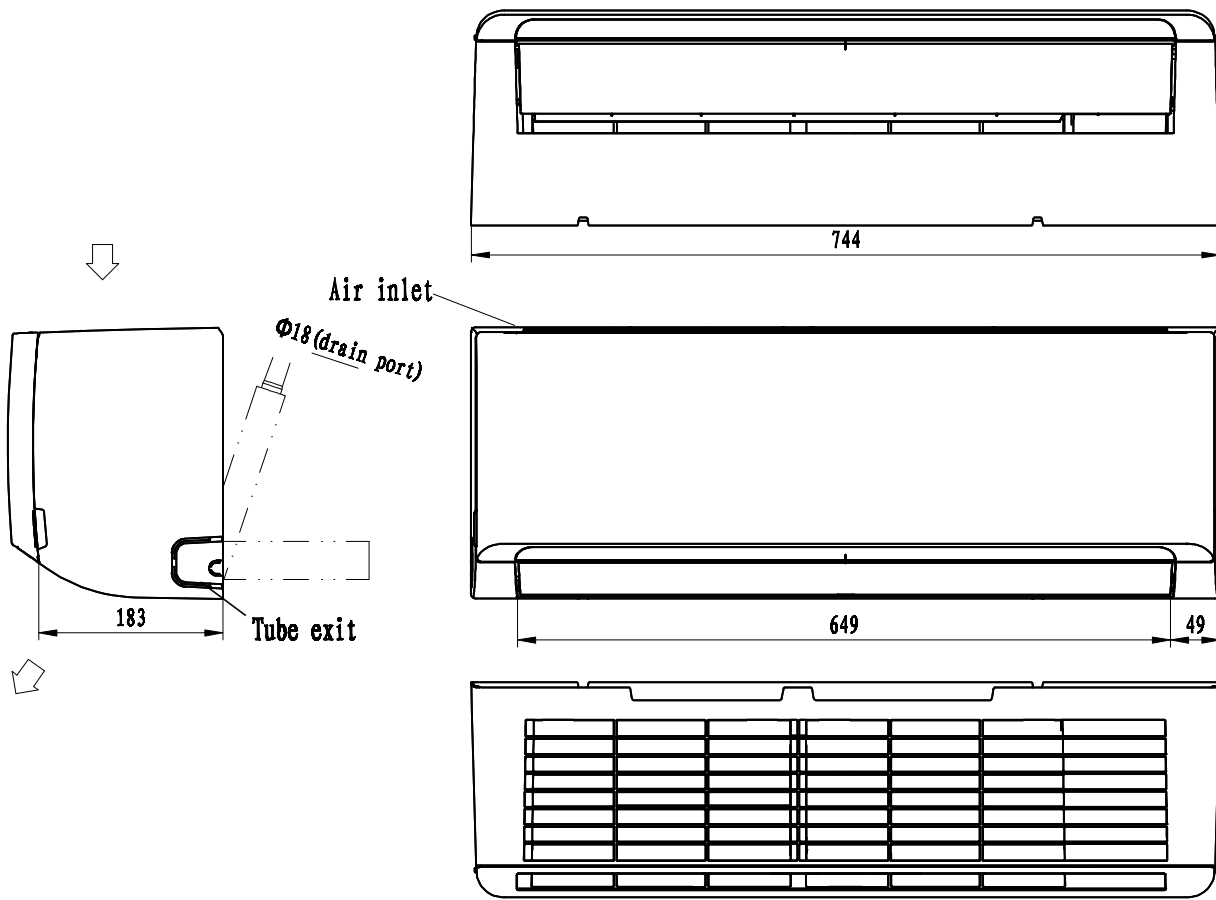
AS-09UR4SYDDA

AS-12UR4SYDDA

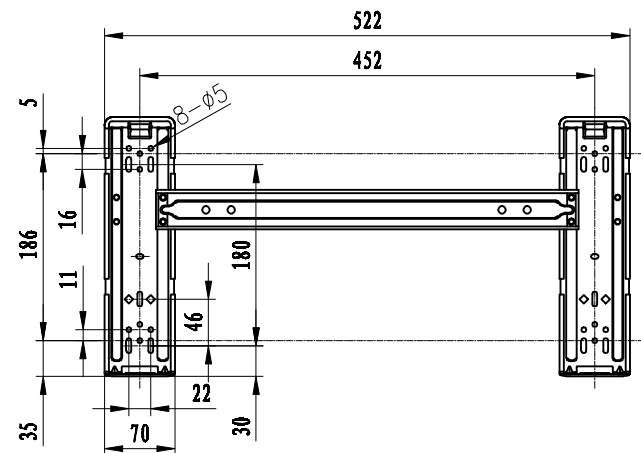
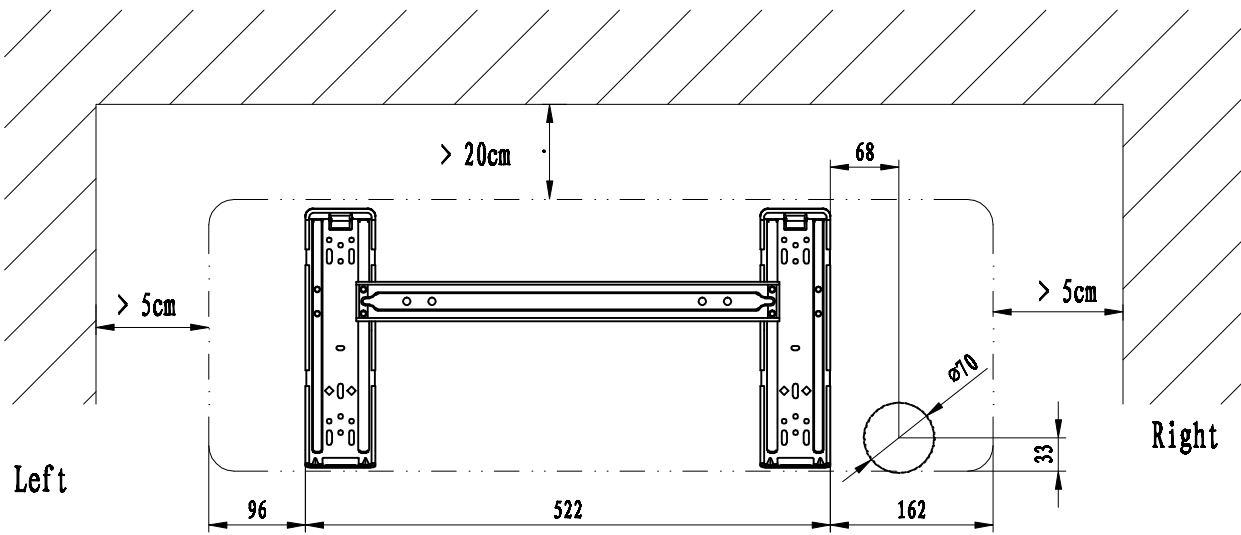


| Model No. | | AS-09UR4SYDDH | AS-12UR4SYDDH |
|---|------------------|-----------------------------|-----------------|
| Cooling Capacity | W | 2600(1400~3000) | 3400(1500~3600) |
| Heating Capacity | W | 2700(1400~3000) | 4000(1500~4100) |
| Rated Input-Cooling | W | 905(350~1250) | 1190(360~1450) |
| Rated Input-Heating | W | 740(350~1300) | 1140(380~1500) |
| SEER | | 5,6 | 5,6 |
| SCOP | | 3,8 | 3,8 |
| Energy Class | Cooling | A+ | A+ |
| Energy Class | Heatling Average | A | A |
| EER for Cooling | W/W | 2,87 | 2,86 |
| COP for Heating | W/W | 3,65 | 3,51 |
| Pdesign Cooling | W | 2600 | 3400 |
| Pdesign Heating Average | W | 2000 | 2800 |
| Moisture Removal | L/H.r | 0,9 | 1,2 |
| Air Circulation | m3/h | 550 | 580 |
| Refrigerant | | R410A | R410A |
| Refrigerant charge volume | g | 620 | 850 |
| Indoor Unit Noise Level - Sound Power | dB (A) | 55 | 55 |
| Indoor Sound Pressure(H/M/L/silence) | dB (A) | 39/37/33/26 | 40/37/33/26 |
| Outdoor Unit Noise Level - Sound Power | dB (A) | 62 | 62 |
| Outdoor Sound pressure | dB (A) | 55 | 55 |
| Voltage, Frequency, Phase | V | 220-240V~,50Hz,1P | |
| Rated Current | Cooling (A) | 4,0 | 5,3 |
| | Heating (A) | 3,4 | 5,1 |
| Liquid Pipe | inch | 1/4 | 1/4 |
| Gas Pipe | inch | 3/8 | 3/8 |
| Other | | | |
| Net Dimensions WxHxD (mm) | Indoor Unit | 745×214×270 | 745×214×270 |
| | Outdoor Unit | 660×482×240 | 660×482×240 |
| Net Weight (Kg) | Indoor Unit | 8 | 8 |
| | Outdoor Unit | 22 | 23 |
| Packing Dimensions WxHxD (mm)(With piple) | Indoor Unit | 800×265×335 | 800×265×335 |
| | Outdoor Unit | 780×530×315 | 780×530×315 |
| Gross Weight (Kg) | Indoor Unit | 9,5 | 9,5 |
| | Outdoor Unit | 24 | 25 |
| Test Standard | | EN 14511,EN 14825, EN 12102 | |
| Approvals | | CE | CE |

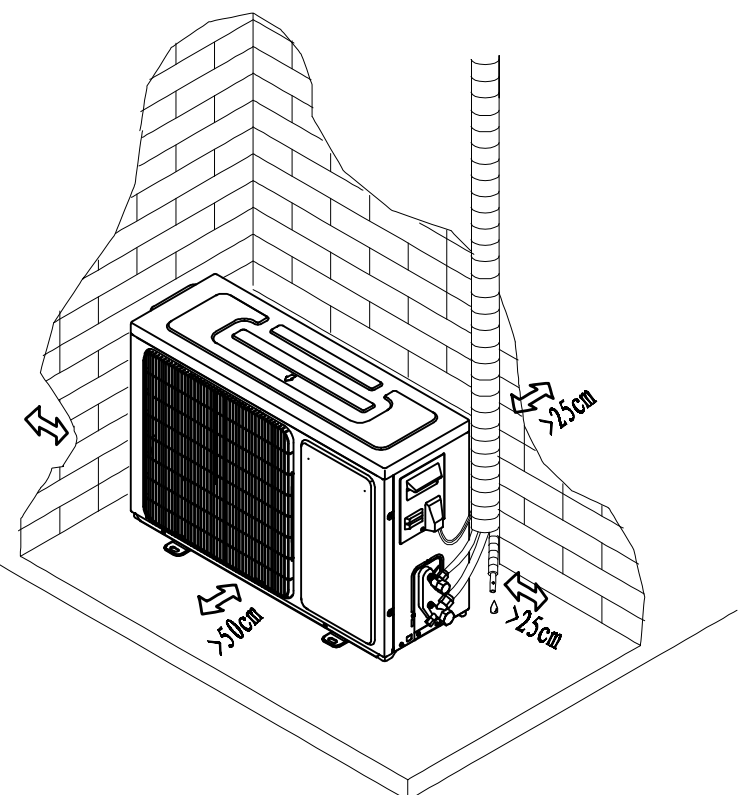
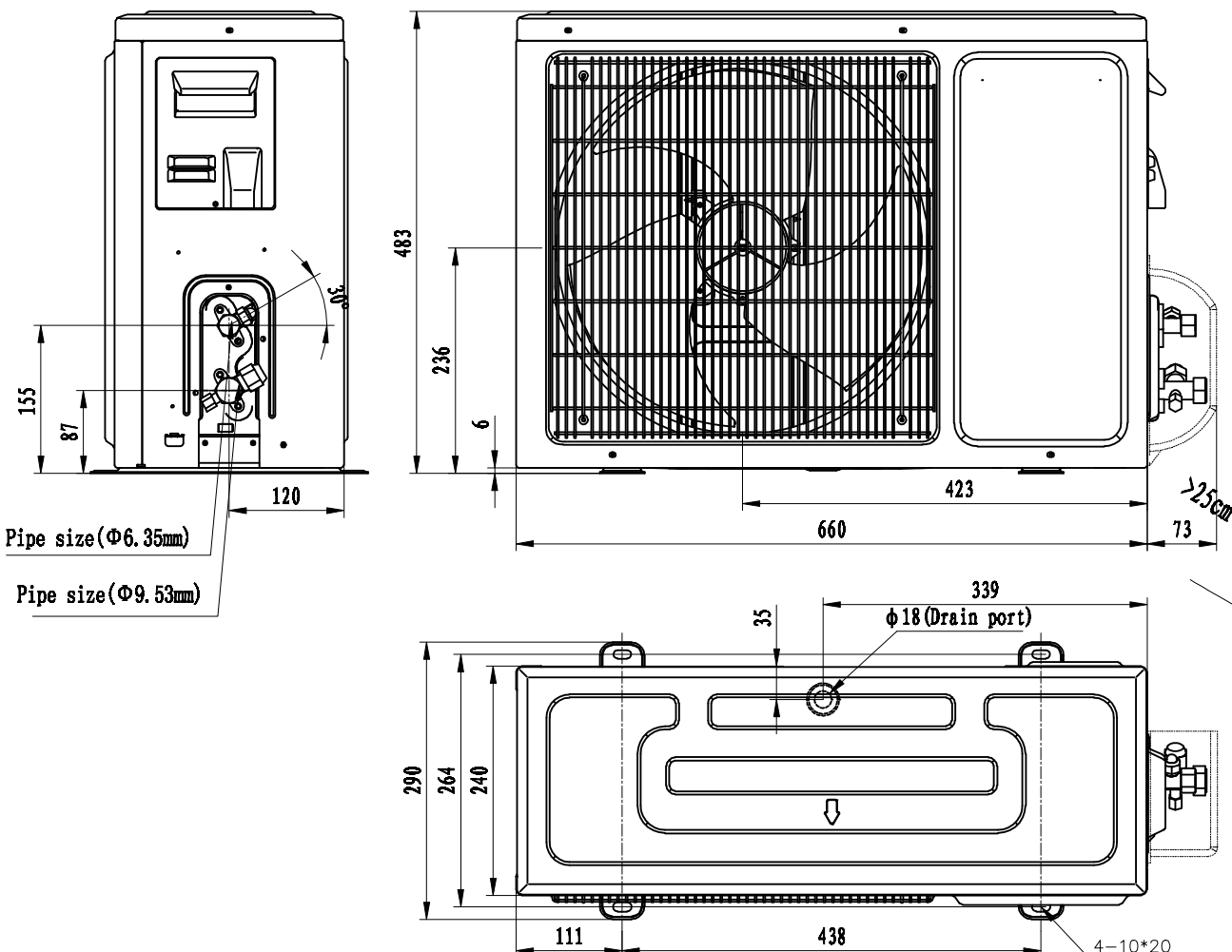
AS-09UR4SYDDH
AS-12UR4SYDDH



Ceiling



| | |
|---------------|---|
| AS-09UR4SYDDH | Liquid Side (Φ6.35mm) Gas Side (Φ9.53mm) |
| AS-12UR4SYDDH | Liquid Side (Φ6.35mm) Gas Side (Φ9.53mm) |



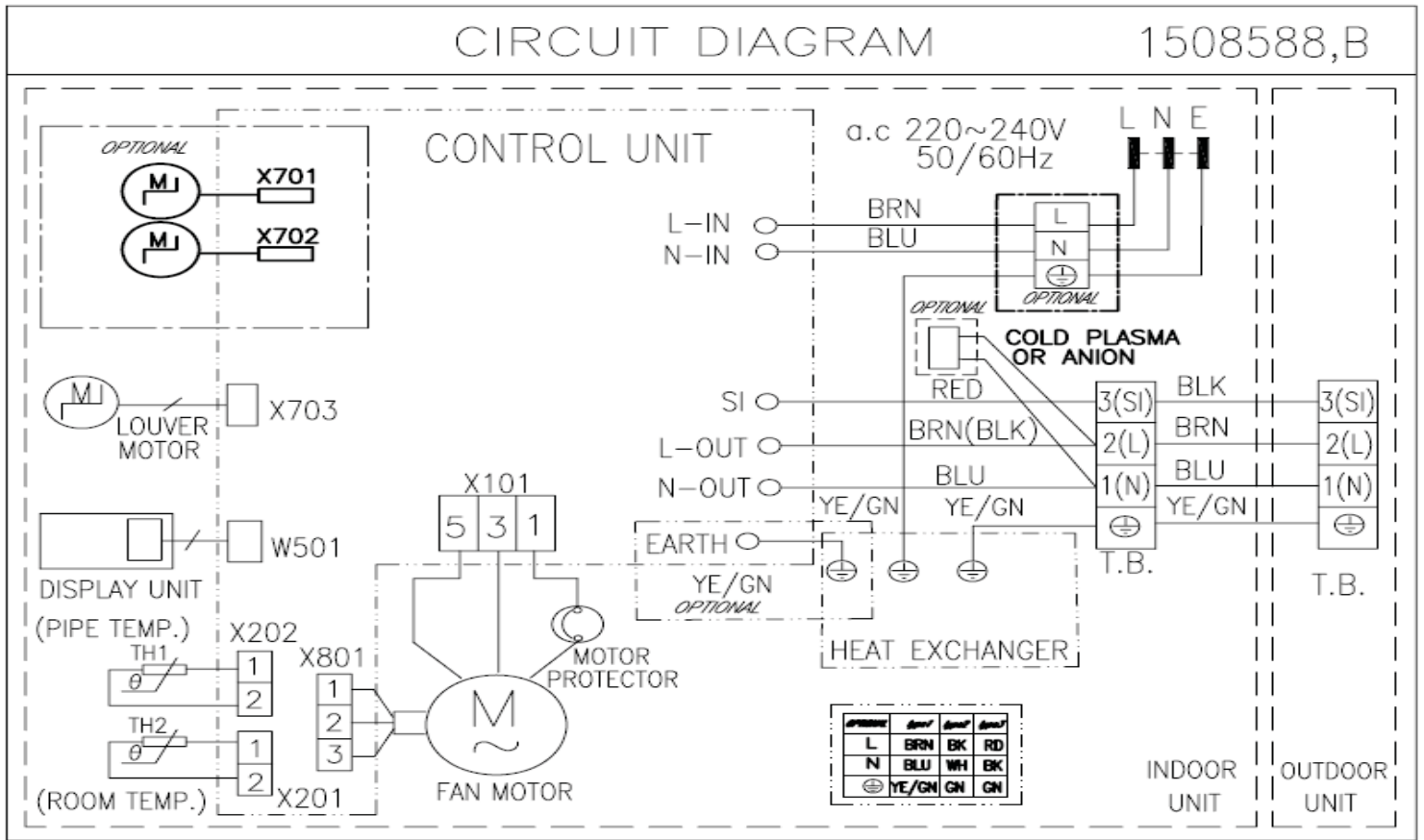
Refrigerant (R410A)

4-1. Electrical wiring diagrams

NOTE: YE/GN=YELLOW/GREEN, BU=BLUE, BN=BROWN, WH=WHITE, BK=BLACK, VT=VIOLET, OG=ORANGE, RD=RED, BRN=BROWN, BLU=BLUE, BLK=BLACK, WHT=WHITE

INDOOR:

(1) AS-09UR4SYDDA AS-12UR4SYDDA (indoor) :



OUTDOOR

(1) AS-09UR4SYDDA AS-12UR4SYDDA (outdoor)

